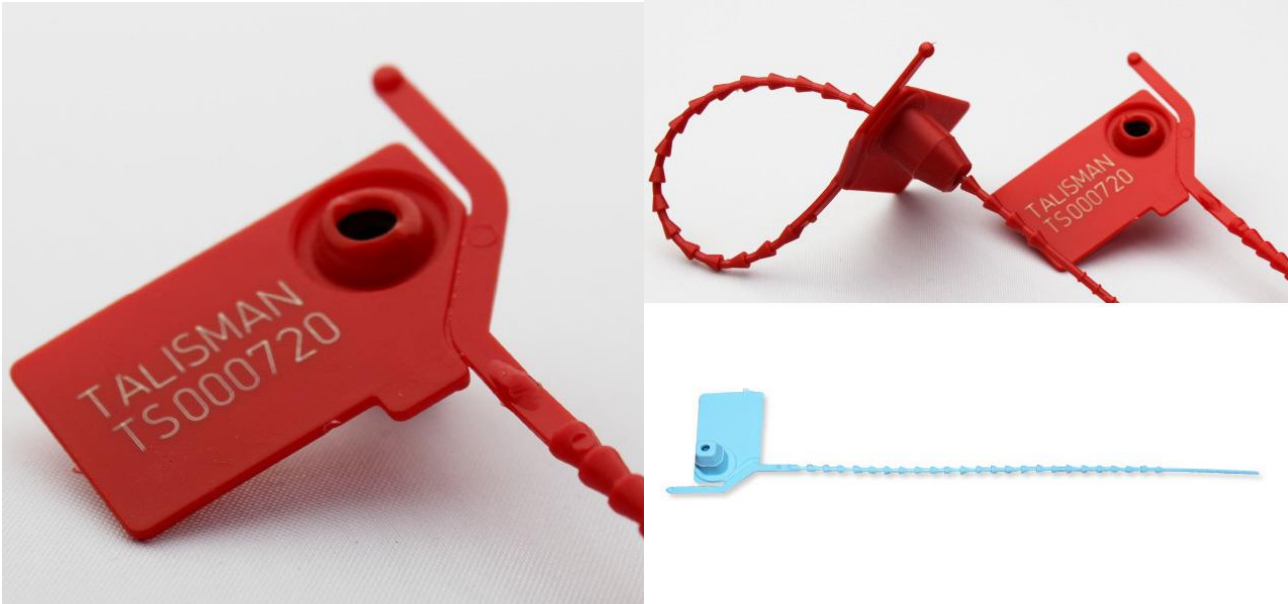


Aceloc

Pull Tight Security Seal

Issue: Jan 2018



The Talisman Aceloc is a pull tight seal manufactured from polyamide with an acetal locking insert, which gives enhanced security.

A tear off feature is included in the seal tag, which allows the seal to be removed without the need for cutting tools, which complies with health and safety requirements and eliminates the cost of cutting tools.

Technical Data

Applications

Securing small bags, casino containers, airline trolleys, etc.

Strap length

155mm

Material

Body: Polyamide
Locking insert: Acetal

Average Breaking Strain

15 kg

Packaging

Mats of 10 in cartons of 1,000

Marking

Laser or hot foil printing
Consecutively numbered as standard
Customer logo can be printed at an extra cost

Colours

Standard colours – Red, green, blue and yellow
Other colours may be available on request

Shipping Specification

Carton Dimensions: 240 x 250 x 420mm
Carton Weight: 2.7kg

01684 584200

Email: sales@talismansecurityseals.co.uk

Fax: 01684 892330

www.talismansecurityseals.co.uk

Talisman Security Seals is a division of
LGG Charlesworth Ltd. Spring Lane,
Malvern, Worcestershire, WR14 1BS


PEMBERSTONE
A Pemberstone company